

S.E. 1/4 OF N.E. 1/4  
SECTION 20, T.6N., R.1W., S.L.B. & M.

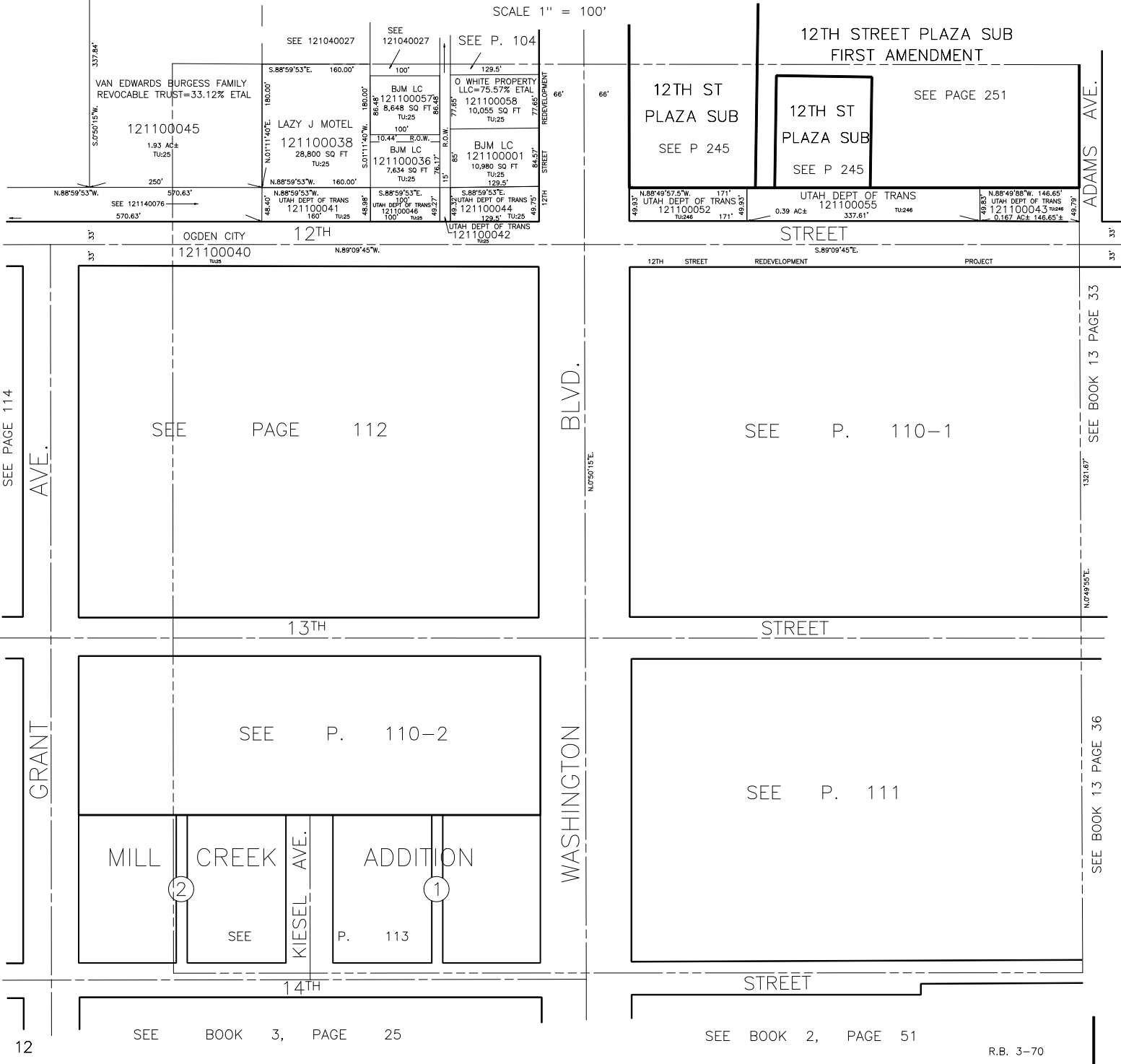
110

ALSO SEE P. 110-1, & P. 110-2

TAXING UNIT: 25, 246

IN OGDEN CITY

SCALE 1" = 100'



121100045

121100038

121100057

121100058

121100036

121100001

121100044

121100042

12TH ST  
PLAZA SUB  
SEE P 245

12TH ST  
PLAZA SUB  
SEE P 245

12TH STREET PLAZA SUB  
FIRST AMENDMENT

SEE PAGE 251

SEE PAGE 112

SEE P. 110-1

SEE P. 110-2

SEE P. 111

MILL

CREEK

ADDITION

SEE

P. 113

12

SEE BOOK 3, PAGE 25

SEE BOOK 2, PAGE 51

R.B. 3-70

SEE PAGE 114

AVE.

GRANT

BLVD.

WASHINGTON

ADAMS AVE.

SEE BOOK 13 PAGE 33

SEE BOOK 13 PAGE 36